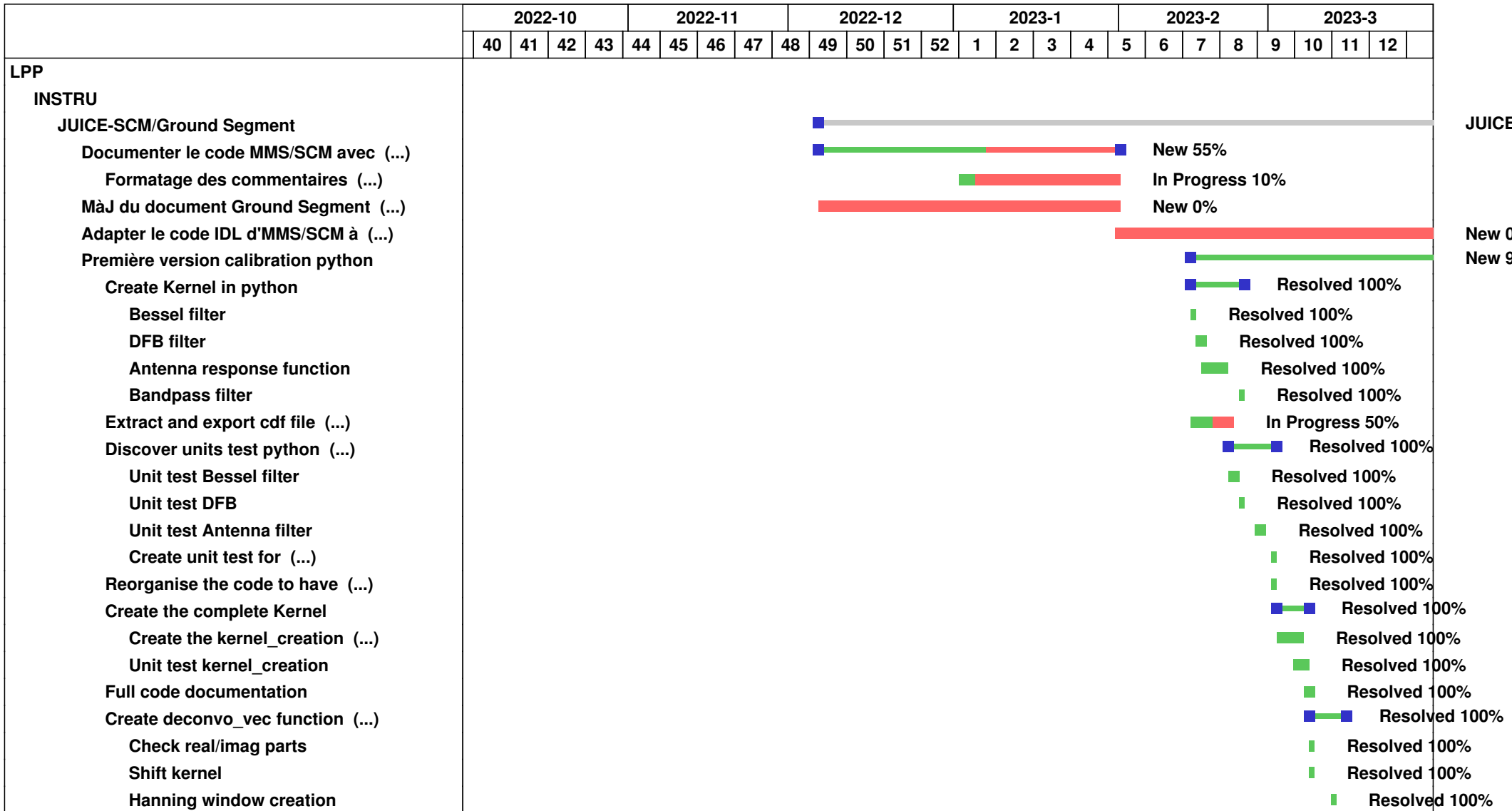



JUICE-SCM/Ground Segment



| | |
|---|------------------|
| Coscub window creation | Resolved 100% |
| Gaussian window creation | Resolved 100% |
| Trapezoid window creation | Resolved 100% |
| Unit test deconvo vec (...) | Resolved 100% |
| Correct the documentation (...) | Resolved 100% |
| deconvo_vec convolution part | Resolved 100% |
| Implement graphical comparison (...) | Resolved 100% |
| Implement blk_con IDL function | Resolved 100% |
| Create Calibrate CDF function | Resolved 100% |
| Implement the blocks (...) | Resolved 100% |
| Implement the cdf writing (...) | Resolved 100% |
| Implement function that compare (...) | Resolved 100% |
| General class to compare waveforms, (...) | Resolved 100% |
| Obtain good result in the (...) | Resolved 100% |
| Implementation of ConfigHandler (...) | Resolved 100% |
| Implement function that compute (...) | Resolved 100% |
| Implement a simple spectrogram (...) | Resolved 100% |
| Create function that plot (...) | Resolved 100% |
| Create Function that compare (...) | Resolved 100% |
| Find why the computed spectrum (...) | Resolved 100% |
| Make documentation of all (...) | Resolved 100% |
| Reorganise and simplify spectra (...) | Resolved 100% |
| Investigate why results are (...) | Resolved 100% |
| Spectra densities computation | Resolved 100% |
| Spectra densities plot and (...) | Resolved 100% |
| Completely change ConfigHandler (...) | Resolved 100% |
| ConfigHandler modularity implementation | In Progress 100% |
| Global attributes and (...) | Resolved 100% |
| default / current / limits (...) | Resolved 100% |
| Make class for deduce (...) | Resolved 100% |
| kernel_creation.py reworked (...) | Resolved 100% |
| Implement system of class (...) | Resolved 100% |
| Spectra powers computation | Resolved 100% |
| Spectra powers plot / comparison | Resolved 100% |

| | | |
|---------------------------------------|---------------|---|
| Quicklook computation / plot | Resolved 100% | |
| Config Handler and config (...) | Resolved 100% | |
| Modularisation of calibrate (...) | Resolved 100% | |
| Create functional Diagram (...) | Resolved 100% | |
| Sphinx documentation with (...) | Resolved 100% | |
| Sphinx documentation with (...) | Resolved 100% | |
| Sphinx documentation with (...) | Resolved 100% | |
| Rewrite the readme with a (...) | Resolved 100% | |
| Add freq samp deducing function (...) | Resolved 100% | |
| Reorganise functions (kernel (...) | Resolved 100% | |
| Adapt the code to use SCHB (...) | Resolved 100% | |
| Adapt the code to have correct (...) | Resolved 100% | |
| Add documentation on all code (...) | Resolved 100% | |
| Make correct and complete (...) | Resolved 100% | |
| Resolve problems with epochs | Resolved 100% | |
| Create script with inline (...) | Resolved 100% | |
| Modify config handler (config (...) | Resolved 100% | |
| Make inline arguments gestion (...) | Resolved 100% | |
| Resolve plenty of problems (...) | Resolved 100% | |
| Implement a first bash script, (...) | Resolved 100% | |
| Resolve problems with venv (...) | Resolved 100% | |
| Make the cdf data extraction (...) | Resolved 100% | |
| Adapt the matlab code for (...) | Resolved 100% | |
| Produce a waveform plot of (...) | Resolved 100% | |
| Take the python code of David (...) | Resolved 100% | |
| Resolve the problem with epochs (...) | Resolved 100% | |
| Create generic log printer (...) | Resolved 100% | |
| Add systematical logs for (...) | Resolved 100% | |
| Modify the extract data/ epoch (...) | Resolved 100% | |
| Reorganisation of kernel construction | Resolved 100% | |
| Add systematical logs for (...) | Resolved 100% | |
| Create and improve the scripts (...) | Resolved 100% | |
| Fourier transform (and inverse (...) | |  Resolved 100% |
| Write installation notice | Resolved 100% | |

| | |
|---|-------------------------|
| Analyse fichiers L1A JUICE | Resolved 100% |
| Create interactive version of quicklook, (...) | In Progress 100% |
| Find proper tools and solutions (...) | Resolved 100% |
| Find proper solution for zoom (...) | Resolved 100% |
| Create a version of quicklook (...) | Resolved 100% |
| Fusion the static and interactive (...) | Resolved 100% |
| Modify the visuals of interactive (...) | Resolved 100% |
| Modify deeply the code organisation (...) | Resolved 100% |
| Improve and resolve problems (...) | Resolved 100% |
| Add buttons to change the (...) | Resolved 100% |
| Adapt the calibration / evaluation (...) | Resolved 100% |
| Start the rework of documentation | Resolved 100% |
| Reorganise and document the display (...) | Resolved 100% |
| Code reorganisation to have scripts (...) | Resolved 100% |
| Lot of new sh and python scripts (...) | Resolved 100% |
| Juice files first calibration | Resolved 100% |
| JUICE quicklook analysis | Resolved 100% |
| Code Analysis / Investigation / (...) | Resolved 100% |
| The problem with JUICE results (...) | Resolved 100% |
| Research with laurent about the (...) | Resolved 100% |
| Make all the variables of input (...) | Resolved 100% |
| Make the script able to specify (...) | Resolved 100% |
| register all remaining taks written (...) | Resolved 100% |
| Debug/resolution of some little (...) | Resolved 100% |
| Documentation debugging | Resolved 100% |
| Create script for documentation (...) | Resolved 100% |
| Documentation complete add and (...) | Resolved 100% |
| New tries concerning the differences (...) | Resolved 100% |
| First version of a "time extract" (...) | Resolved 100% |
| Finish complete time extract method | Resolved 100% |
| implement system to check the version (...) | Resolved 100% |
| Create 'file name' used in plot (...) | Resolved 100% |
| Make the 'file name' in the plot (...) | Resolved 100% |
| Create a sh script that use time (...) | Resolved 100% |

| | |
|---|-------------------------|
| Modify the extract argvs and env (...) | Resolved 100% |
| Modify the extract_cdf methods (...) | Resolved 100% |
| Make all the python and sh scripts (...) | Resolved 100% |
| Create a GUI for selection of a (...) | Resolved 100% |
| Find the problem of difference (...) | Resolved 100% |
| Make the GUI able to select what (...) | Resolved 100% |
| Advances in the comparison between (...) | Resolved 100% |
| Reorganisation of the python scripts (...) | Resolved 100% |
| Make the GUI a general tool, replacing (...) | Resolved 100% |
| Update documentation for time/solo (...) | Resolved 100% |
| Add a check if we don't find cdfs (...) | Resolved 100% |
| Find the cdfs with temperature (...) | Resolved 100% |
| Modify the data extraction method (...) | Resolved 100% |
| Modify the evaluation part (creation (...) | Resolved 100% |
| Improvements and bug resolve for (...) | Resolved 100% |
| Professional training about the (...) | Resolved 100% |
| Change the code from pyenv environnement (...) | Resolved 100% |
| Software exploration for documentation (...) | Resolved 100% |
| Documentation improvements following (...) | Resolved 100% |
| Documentation update, especially (...) | Resolved 100% |
| Bug solving for spectrum computation (...) | Resolved 100% |
| Gathering and analysis of all remaining (...) | Resolved 100% |
| Discovering of the Ruff linter (...) | Resolved 100% |
| Creation of a ruff pre commit hook | Resolved 100% |
| Add documentation handle in pre (...) | Resolved 100% |
| Discover of pytest and add to pre (...) | Resolved 100% |
| Add multiple pytests (init, extract, (...) | Resolved 100% |
| Add a system that allows to handle (...) | Resolved 100% |
| Research for a method to easily (...) | Resolved 100% |
| Creation of a visual documentation (...) | In Progress 100% |
| Make the writing and initialization (...) | Resolved 100% |
| Create pdf user documentation (Three (...) | Resolved 100% |
| Test the different SID, gather (...) | Resolved 100% |
| Update sphinx documentation for (...) | Resolved 100% |

| | |
|---|----------------------|
| Modify the code to be coherent (...) | Resolved 100% |
| Bug with MMS files now that the (...) | Resolved 100% |
| Add of some modularisation in parameters | Resolved 100% |
| Creation of a table documenting (...) | Resolved 100% |
| Improve and simplify some parameters (...) | Resolved 100% |
| Clean and simplify the config files | Resolved 100% |
| Change the way the datetimes are (...) | Resolved 100% |
| Find how to force the documentation (...) | Resolved 100% |
| Improve the GUI by adding a embedded (...) | Resolved 100% |
| Develop a little code that for (...) | Resolved 100% |
| Generate a directory with quicklooks (...) | Resolved 100% |
| Resolve the problem concerning (...) | Resolved 100% |
| Resolve the problem concerning (...) | Resolved 100% |
| Research to find a standardisation (...) | Resolved 100% |
| Implement a logging code levels (...) | Resolved 100% |
| Reshape the write log part, with (...) | Resolved 100% |
| Search different support data (temperatures, (...) | Resolved 100% |
| Test the extract of temperatures (...) | Resolved 100% |
| major change : all the extracted (...) | Resolved 100% |
| Complete reshape of the method (...) | Resolved 100% |
| Add the temperature waveform to (...) | Resolved 100% |
| Create new file prepare_data_for_plot (...) | Resolved 100% |
| Produce and test the creation of (...) | Resolved 100% |
| Meeting with Alessandro on the (...) | Resolved 100% |
| Resolve massive problem of performance (...) | Resolved 100% |
| Benchmarking of the code execution (...) | Resolved 100% |
| Annual Report writing | Resolved 100% |